

Digital Camera Coupler



Optem® Digital Camera Coupler... when immediacy and quality count!

With Optem Digital Camera Couplers, you don't have to compromise quality to enjoy the immediacy and ease of supporting your research with a wide range of contemporary, consumer-grade megapixel cameras.

Engineered the highest-quality image transmission to your camera, Optem Digital Couplers are optimized to fully leverage your camera's optical zoom and reduce dependency on "empty" digital magnification to eliminate vignetting for your camera.

Choose from a variety of microscope-end mounting options... C-mount, 38mm ISO port, 23mm or 30mm eyepices, 25mm phototube. For added convenience with recent model cameras, Optem Couplers are available in Quik-Connect kits to eliminate the need for after-market lens tube adapters and step down rings.

Make the quality connection for your digital research imagery... specify Optem Digital Camera Couplers.

NOW
available for
OLYMPUS SP 310/320/350
COOLPIX 8400

Martin Microscope Co.
MM3XS + M4537 Coupler

ScopeTronix MaxView Plus
w/ Digi-T kit STAK60

OPTEM® 25-70-64
CP5400 Coupler Kit



Soft focus and more distortion at maximum optical zoom

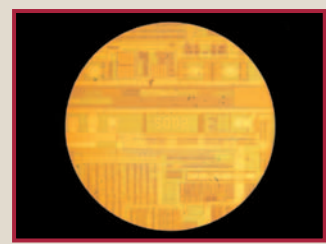
Greater distortion and less mag. at maximum optical zoom

Crisp, undistorted image with more mag. at max. optical zoom

30% Greater vignetting than Optem Omni Coupler

28% Greater vignetting than Optem Omni Coupler

Least amount of vignetting at minimum optical zoom



**Your quality
microscopy
connection!**

All images shown above as captured with Nikon CoolPix 5400 camera, brought into focus at low magnification and zoomed up to the high limit of the 4:1 optical magnification.

DIGITAL CAMERA COUPLERS

ORDERING CHART

Specifying Your Digital Coupler

1 Locate your digital camera and indicate the 6-digit coupler designator in column #1. 2 Identify your desired mounting method from the four options indicated by the 2-digit code in column #2.

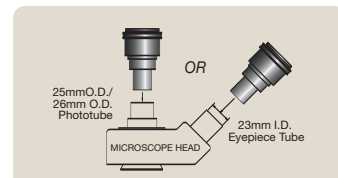
Or visit www.qioptiqimaging.com and utilize our online Coupler Configurator for the most current information.

CAMERA Brand/Model	OPTEM™ Coupler	Column #2 Microscope Mount				Camera Requires LENS-TUBE ADAPTER	Camera Requires STEP-DOWN RING(S)	
		25mm OD Phototube	23mm ID Eyepiece tube	30mm ID Eyepiece tube	C-Mount			
CANON	Powershot G1	25-70-10	-01	-02	-02	-04	Y	N
	Powershot G2	25-70-10	-01	-02	-02	-04	Y	N
	Powershot G3	25-70-10	-01	-02	-02	-04	Y	Y (58-43mm)
	Powershot G5	25-70-10	-01	-02	-02	-04	Y	Y (58-43mm)
FUJI	FinePix 4800Z	25-70-11	-01	-02	-03	-04	Y	N
	FinePix 4900Z	25-70-10	-01	-02	-02	-04	Y	N
	FinePix 6800Z	25-70-11	-01	-02	-03	-04	Y	N
	FinePix 6900Z	25-70-10	-01	-02	-02	-04	Y	N
KODAK	DC260	25-70-11	-01	-02	-03	-04	Y	N
	DC265	25-70-11	-01	-02	-03	-04	Y	N
	DC290	25-70-11	-01	-02	-03	-04	Y	N
	DX4900	25-70-11	-01	-02	-03	-04	Y	N
NIKON	CoolPix 800	25-70-14	-01	-02	-03	-04	N	N
	CoolPix 880	25-70-14	-01	-02	-03	-04	Y	N
	CoolPix 885	25-70-14	-01	-02	-03	-04	Y	N
	CoolPix 900	25-70-14	-01	-02	-03	-04	N	N
	CoolPix 950	25-70-14	-01	-02	-03	-04	N	N
	CoolPix 990	25-70-14	-01	-02	-03	-04	N	N
	CoolPix 995	25-70-14	-01	-02	-03	-04	N	N
	CoolPix 4300	25-70-14	-01	-02	-03	-04	Y	N
	CoolPix 4500	25-70-14	-01	-02	-03	-04	N	N
	KIT CoolPix 5000	25-70-63	-01	-02	-03	-04	N	N
	KIT CoolPix 5400	25-70-64	-01	-02	-02	-04	N	N
	KIT CoolPix 5700	25-70-68	-01	-02	-03	-04	N	N
KIT CoolPix 8400	25-84-00	-01	-02	-02	-04	N	N	
OLYMPUS	KIT SP-310	25-70-35	-01	-02	-03	-04	N	N
	KIT SP-320	25-70-35	-01	-02	-03	-04	N	N
	KIT SP-350	25-70-35	-01	-02	-03	-04	N	N
	C/2020	25-70-10	-01	-02	-02	-04	Y	N
	C/2040	25-70-10	-01	-02	-02	-04	Y	N
	C/3000	25-70-10	-01	-02	-02	-04	Y	N
	C/3030	25-70-10	-01	-02	-02	-04	Y	N
	C/3040	25-70-10	-01	-02	-02	-04	Y	N
	C/4000	25-70-10	-01	-02	-02	-04	Y	N
	C/4040	25-70-10	-01	-02	-02	-04	Y	N
C/5050	25-70-10	-01	-02	-02	-04	Y	N	
E-20N	25-70-10	-01	-02	-02	-04	N	Y (62-43mm)	
SONY	CyberShot DSC-P20	25-70-11	-01	-02	-03	-04	N	N
	CyberShot DSC-P30	25-70-11	-01	-02	-03	-04	N	N
	CyberShot DSC-P50	25-70-11	-01	-02	-03	-04	N	N
	CyberShot DSC-S70	25-70-10	-01	-02	-02	-04	Y	N
	CyberShot DSC-S75	25-70-10	-01	-02	-02	-04	Y	N
	CyberShot DSC-S85	25-70-10	-01	-02	-02	-04	Y	N
	CyberShot DSC-F717	25-70-10	-01	-02	-02	-04	N	Y (58-43mm)
	Mavica MVC-FD71	25-70-11	-01	-02	-03	-04	N	N
	Mavica MVC-FD73	25-70-11	-01	-02	-03	-04	N	N
	Mavica MVC-FD75	25-70-11	-01	-02	-03	-04	N	N
	Mavica MVC-FD81	25-70-11	-01	-02	-03	-04	N	N
	Mavica MVC-FD83	25-70-11	-01	-02	-03	-04	N	N
	Mavica MVC-FD85	25-70-11	-01	-02	-03	-04	N	N
	Mavica MVC-FD87	25-70-11	-01	-02	-03	-04	N	N
	Mavica MVC-FD88	25-70-11	-01	-02	-03	-04	N	N
	Mavica MVC-FD90	25-70-11	-01	-02	-03	-04	N	N
Mavica MVC-FD92	25-70-11	-01	-02	-03	-04	N	N	
Mavica MVC-CD300	25-70-10	-01	-02	-03	-04	Y	N	
Mavica MVC-CD350	25-70-11	-01	-02	-03	-04	N	N	
Mavica MVC-CD500	25-70-10	-01	-02	-03	-04	Y	N	



Optem® Quik-Connect Kits

To ensure optimal imaging performance, easier integration and one-stop convenience, we have initiated the Quik-Connect kitting program to address the top digital cameras. Each kit includes all components needed to mount your camera... no second sourcing for additional step down rings or tube adapters. Watch for other camera kits coming soon.

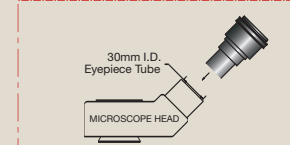


Mount Type -01



As shown
25-70-10-01

ORDERING NOTE!

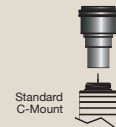


Mount Type -02

NOTE: Mount types -02 and -03 are the same bottom component when ordered for the Omni Coupler 25-70-10 and are specified as mount option -02

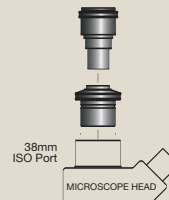


As shown
25-70-10-02



Mount Type -03

ORDERING NOTE!



Mount Type -04



As shown
25-70-10-04

NOTE: With today's diverse digital camera universe, optical performance with Optem Digital Camera Couplers may vary from camera to camera. For cameras not indicated in the chart above, contact Qioptiq Imaging Solutions.

Y = Indicates some required components are not available from Qioptiq. Please refer to your camera owner's manual.