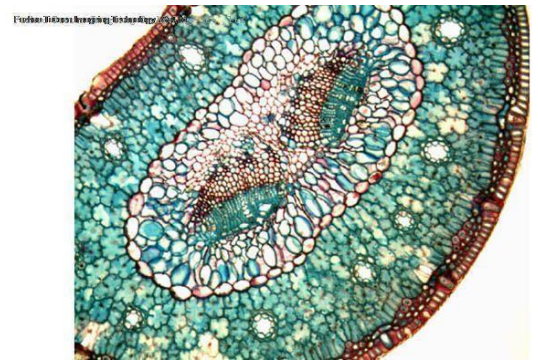


# Tucsen ISH 300, ISH500, ISH1000 Colour Cameras



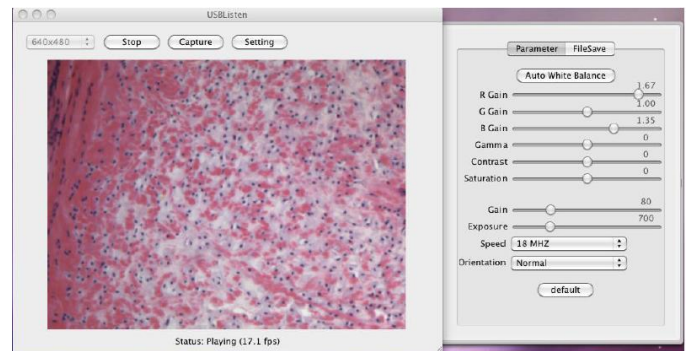
Tucsen manufacture a range of colour CMOS cameras with USB2.0 connection to both Windows and Macintosh computers. They are also supplied with TWAIN and Direct Show drivers to run in other Windows applications. The ISCapture (only for Windows XP, Win 7, Win8) has features such as measurement of lines, circles, polygons, etc. Annotation on images with arrows etc. EDF and Image Stitching , Class Counting (upto 5 classes)is available. Capture of both still images in TIFF, BMP, JPEG format as well as Movies in AVI format.

## Eyepiece camera system:

The ISH 300, 500 and 1000 are available as an Eyepiece camera by ordering the pack i.e. ISH300-PK This includes a 0.47x reduction lens C mount that fits standard 23mm eyepieces tubes. It also comes with adapters for 30mm (Stereo Mics) 30.5mm with C mount for attaching to C mount 1.0x.



ISH camera mounted on binocular microscope with TCN eyepiece adapter

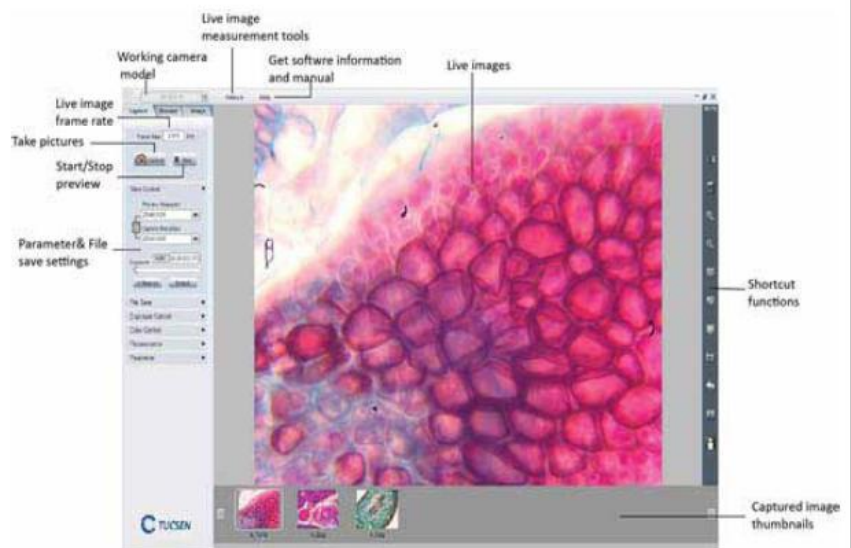


IS Listen for Macintosh

	ISH300	ISH500	ISH1000
Sensor	Micron MT9T001	Micron MT9P031	Micron MT9J001
Colour/monochrome		Colour	Colour
Sensor size	1/2"	1/2.5"	1/2.3"
Pixel size(µm)	3.2 x3.2	2.2x2.2	1.67 x1.67
Effective pixels	3.0MP	5.0MP	10MP
Max.resolution (HxV)	2048 x1536	2592x1944	3664 x2748
Scan mode	Progressive	Progressive	Progressive
Shutter	Rolling shutter	Rolling shutter	Rolling shutter
Frame rate	10fps (2048x1536)	5fps(2592 × 1944 Full Frame)	3fps (3856 x2764)
	25fps (1024 x768)	21fps(1280*960)	8fps (1832 x1370)
	40fps (640x480)	25fps (1024 × 768)	28fps (916 x680)
		38fps (640 × 480)	
Colour depth	24bit	24bit	24 bit
A/D	8 bit	8 bit	8 bit
Exposure Control	Manual/Auto	Manual/Auto	Manual/Auto
Integration Time (S)	0.001-0.5	0.001-0.8	0.001-1.0
White Balance	Manual/Auto	Manual/Auto	manual/auto
Dynamic range	54dB	60dB	56dB
Operating temperature	0-60°C	0-60°C	0-60C
Operating humidity	45%-85%	45%-85%	45%-85%
Storage temperature	-20to70°C	-20to70°C	-20 to70C
Operating system	Windows / Linux / Mac	Windows / Linux / Mac	Windows / Linux / Mac
Optical port	C-Mount	C-Mount	C-Mount
Data interface	USB2.0/480Mb/s	USB2.0/480Mb/s	USB2.0/480Mb/s

## ISCapture

Windows software allows for the control and capture of images. Still, movies, time-lapse is available. Live measurement, Calibration bar. Annotate the image etc. Manual Image Analysis. Captured image manipulation. Image stitching.



**Scientific Instrument and Optical Sales**  
 Unit 1, 62 Bishop Street, Kelvin Grove. Qld. 4059  
 Phone (07) 3356 0233 Fax (07) 3356 0344  
 e-mail sales@sios.net.au